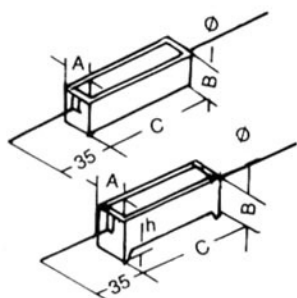


RX25(RXG4)型塗漆線繞電阻器  
Model RX25(RXG4) Stationary Resistor

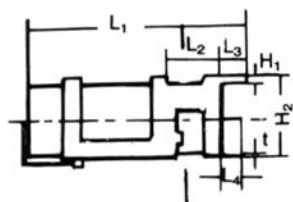
額定功率 Rated power (W)	阻值範圍 Resistance ranges ( $\Omega$ )	外型尺寸(mm) Dimensions							
		L	l	H	h	B	b	D	t
		3	1~100	21.5	12.5	20	4.5	4.5	3
6	1~800	26.5	15	22	4.5	5.5	3	10	0.4
8	1~1K	41.5	30	22	4.5	5.5	3	10	0.4
10	1~2K	54.4	42.5	22	4.5	5.5	3	10	0.4

RX27-1,RX27-2(RXG5)型線繞、RX27-1,RJ27-2 型金屬膜瓷殼電阻器  
Model RX27-1,RX27-2(RXG5),RJ27-1,RJ27-2 Stationary Resistor Winding



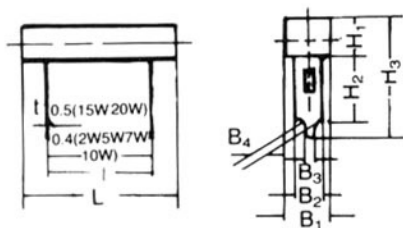
額定功率 Rated power (W)	阻值範圍( $\Omega$ ) Resistance ranges		外型尺寸(mm) Dimensions			
	RX	RJ	A/B	C	$\varnothing$	h
2	0.2~270	300~33K	6.4	18	0.8	1.5
3	0.2~680	750~43K	8.0	22	0.8	1.5
5	0.2~750	820~56K	9.5	22	0.8	1.5
7	0.6~1.2K	1.3K~75K	9.5	35	0.8	3.0
10	1~1.8K	2.0K~82K	9.5	48	0.8	3.0
15	1~2.2K	2.4K~91K	12.5	48	1.0	3.0
20	1.5~2.7K	3.0K~100K	12.5	63.5	1.0	3.0

RX27-1V(RXG5V)型線繞、RJ27-1V 型金屬膜瓷殼電阻器  
Model RX27-1V(RXG5V),RJ27-1V Stationary Resistor Winding



額定功率 Rated power (W)	阻值範圍( $\Omega$ ) Resistance ranges		外型尺寸(mm) Dimensions						
	RX	RJ	L <sub>1</sub>	L <sub>2</sub>	L <sub>3</sub>	L <sub>4</sub>	H <sub>1</sub>	H <sub>2</sub>	t
7	0.6~1.2K	1.3K~75K	47	8	4	5	1.5	11	0.5
10	1~1.8K	2.0K~82K	60	8	4	5	1.5	11	0.5
15	1~2.2K	2.4K~91K	61.5	9	4.5	6.5	2.5	14	0.5
20	1.5~2.7K	3.0K~100K	77	9	4.5	6.5	2.5	14	0.5

RX27-3(RXG6)型線繞、RJ27-3 型金屬膜瓷殼電阻器  
Model RX27-3(RXG6),RJ27-3 Stationary Resistor Winding



額定功率 Rated power (W)	阻值範圍( $\Omega$ ) Resistance ranges		外型尺寸(mm) Dimensions								
	RX	RJ	L	l	B <sub>1</sub> /H <sub>1</sub>	B <sub>2</sub>	B <sub>3</sub>	B <sub>4</sub>	H <sub>2</sub>	H <sub>3</sub>	
3	0.2~680	750~43K	24	12.5	9.0	5	1.4	1.6	10	23.5	
5	0.2~750	820~56K	27	15	9.5	5	1.4	1.6	10	24	
7	0.6~1.2	1.3K~75K	35	22.5	9.5	5	1.4	1.6	10	24	
10	1~1.8K	2.0K~82K	48	35	9.5	5	1.4	1.6	10	24	
15	1~2.2K	2.4K~91K	48	32.5	12.5	10	2.7	3.0	15	34.6	
20	1.5~2.7K	3.0K~100K	63	50.0	12.5	10	2.7	3.0	15	34.6	